



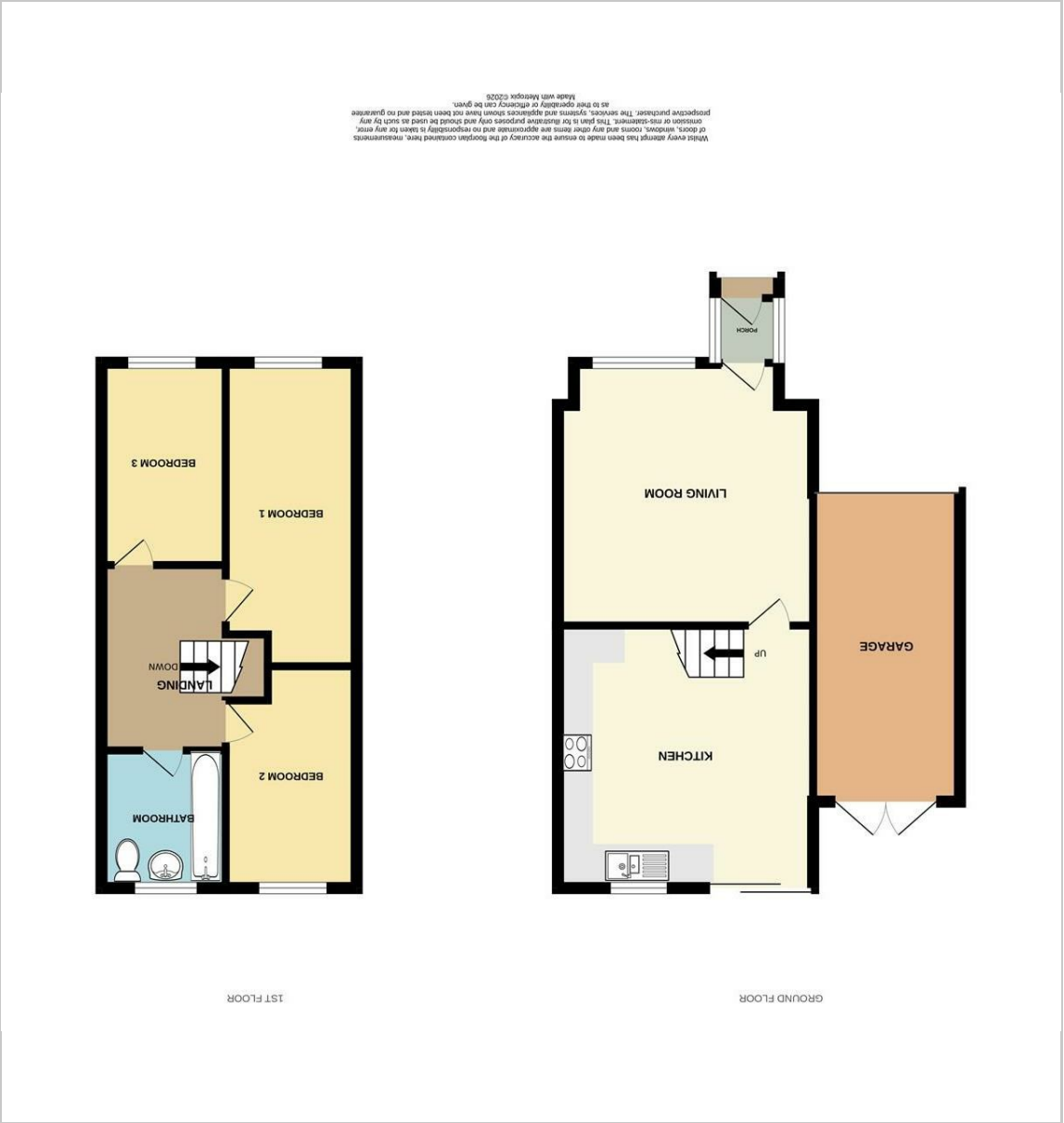
11 Seasalter Close  
Warden, Sheerness, ME12 4PF

Offers in excess of £275,000

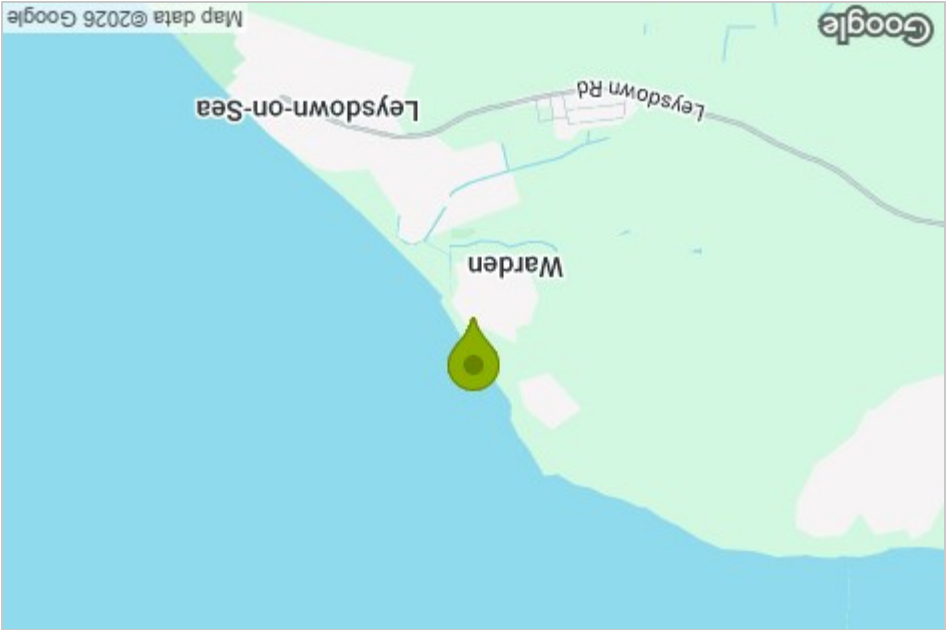
3 1 1 C



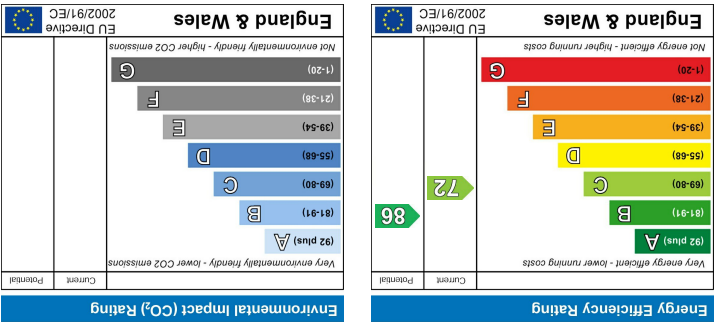
Floor Plan



Area Map



Energy Efficiency Graph



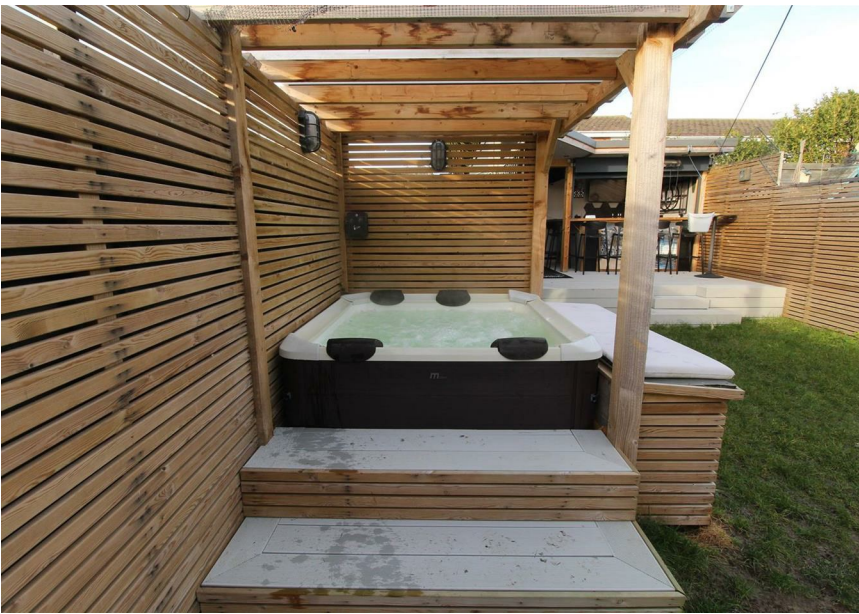
Viewing

Please contact our Isle of Sheppey Office on 01795 666 666 if you wish to arrange a viewing appointment for this property or require further information.

These particulars, whilst believed to be accurate are set out as a general outline only for guidance and do not constitute any part of an offer or contract. Intending purchasers should not rely on them as statements of representation or fact, but must satisfy themselves by inspection or otherwise as to their accuracy. No person in this firm's employment has the authority to make or give any representation or warranty in respect of the property.



# 11 Seasalter Close



- 3 Bed End Of Terrace House
- Modern Throughout
- Outside Built In Bar Along With Outside WC
- Built In jacuzzi
- Short Walk To The Beach
- Open Plan Living
- Private Rear Garden Offering Space To Relax And Entertain
- New Built Garage And Driveway
- Ideal For First Time Buyers or Investors
- Council Tax Band B

## Description

Offers In Excess Of £275,000

Just a few minutes from the beach, Seasalter Close, Warden, Sheerness, this delightful three-bedroom end terrace house presents an exceptional opportunity for both families and individuals seeking a modern home in a popular area. The property boasts off-road parking and a garage, ensuring convenience and ease for residents and visitors alike.

Step inside to discover a beautifully designed interior that exudes contemporary style and comfort. Every corner of this home has been thoughtfully crafted, making it a perfect canvas for your personal touch. The spacious living areas are ideal for relaxation and family gatherings, while the modern kitchen is equipped to meet all your culinary needs.

One of the standout features of this property is the fabulously designed garden, which is perfect for entertaining. Imagine hosting summer barbecues or enjoying tranquil evenings in your very own jacuzzi, surrounded by lush greenery. This outdoor space is not just a garden; it is an extension of your living area, offering a serene retreat from the hustle and bustle of daily life.

Located in the sought-after area of Warden Bay, this home is just a short walk from the beach, allowing you to enjoy the stunning coastal views and the refreshing sea breeze at your leisure. The community is friendly and welcoming, making it an ideal place to settle down.

In summary, this modern three-bedroom end terrace house in Warden offers a perfect blend of style, comfort, and outdoor living, all within a stone's throw of the beach. It is a rare find that promises to be a wonderful place to call home.

Warden, Sheerness, ME12 4PF

